

NEUROSCIENCE

Essential Tools for Parkinson's Disease

Application specific antibodies and reagents for neuroscience research

Parkinson's disease (PD) affects approximately 7-10 million people worldwide, with statistically more men suffering from this progressive neurodegenerative disease than women.

The disease is strongly associated with the occurrence of Lewy bodies, which are clumps of the protein alpha-synuclein associated with other proteins. The formation of Lewy bodies may be caused by mitochondrial dysfunction, although the role of these clumps in the development of PD is still uncertain.

Bio-Rad has an extensive range of antibodies for PD research including:

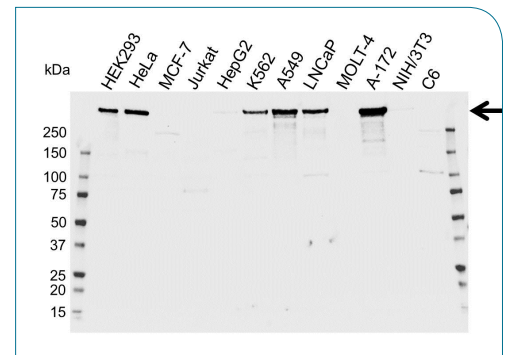
- Wide range of key biomarkers
- Alpha-synuclein antibodies for immunohistochemistry
- Tested in a variety of applications
- Guaranteed performance to specification

Featured Product:

Goat anti-human LRRK2 (VPA00118)

LRRK2 is a member of the leucine-rich repeat kinase family and encodes a protein with an ankyrin repeat region, a leucine-rich repeat (LRR) domain, a kinase domain, a DFG-like motif, a RAS domain, a GTPase domain, a MLK-like domain, and a WD40 domain.

The protein is present largely in the cytoplasm but also associates with the mitochondrial outer membrane. Mutations in LRRK2 have been associated with Parkinson disease-8.



Goat anti-human LRRK2 (VPA00118)

Western blot analysis of whole cell lysates probed with LRRK2 antibody followed by detection with HRP conjugated donkey anti-sheep/goat IgG (1/10,000, STAR88P) and visualized on the ChemiDoc MP with 22 second exposure. Arrow points to LRRK2 (molecular weight 286 kDa)

BIO-RAD

Parkinson's Disease

Bio-Rad has an extensive range of antibodies for PD research, some of which are highlighted below. Further products can be found on our website bio-rad-antibodies.com/neuroscience

Specificity	Target	Clone	Species Reactivity	Applications	Host	Format	Size	Catalog Number
ALPHA SYNUCLEIN	Human	Poly		E, IHC-P	Goat	Serum	0.1 ml	AHP493
ALPHA SYNUCLEIN (pSer129)	Rat	Poly	Co, Dg, Hu, Mo, Pr	WB*	Rabbit	Pur.	0.1 ml	AHP1537
DOPAMINE	Broad	DA.2B11, IgG2b		E, IF/ICC	Mouse	Pur.	0.1 mg	3940-0505
GSK3 beta (pS9)	Rat	Poly	Co, Dg, Hu, Mo, Pr	WB	Rabbit	Pur.	0.1 ml	AHP1233
LRKK2	Human	Poly		WB	Goat	Pur.	2/10 Westerns	VPA0118
Parc	Human	3F7		WB	Mouse	Az.Fr.	0.1 mg	MCA4369Z
PARKIN	Human	1H4, IgG3		IF/ICC WB	Mouse	Az.Fr.	0.1 mg	MCA3315Z
PARKIN	Human	Poly		IHC-P, WB	Goat	Serum	0.1 ml	AHP495
PARKIN (pS101)	Human	Poly	Co, Pr	WB	Rabbit	Pur.	0.1 ml	AHP1304
PARKIN (pS378)	Human	Poly		WB	Rabbit	Pur.	0.1 ml	AHP1305
PGP 9.5	Human	31A3, IgG1	Gp, Rt	E, IHC-P*, WB	Mouse	Pur.	0.2 mg	7863-1004
PINK1	Human	11408		IHC-F, IHC-P*, WB	HuCAL®	Pur.	0.1 mg	HCA150
SYNPHILIN 1	Human	Poly		E, IF/ICC, IHC-P, WB	Goat	Serum	0.1 ml	AHP593
TYROSINE HYDROXYLASE (pSer40)	Human	Poly	Mo, Pg, Rt	IHC-F, IF/ICC, WB*	Rabbit	Pur.	0.1 ml	AHP912

Abbreviations: Az.Fr. = Azide Free, E = ELISA, IF/ICC = Immunofluorescence/Immunocytochemistry, IHC-F = Immunohistochemistry - Frozen (Cryostat), IHC-P = Immunohistochemistry - Paraffin, Poly = Polyclonal, Pur. = Purified, WB = Western Blotting.

Co = Cow, Dg = Dog, Gp - Guinea Pig, Hu = Human, Mo = Mouse, Pg = Pig, Pr = Primate, Rt = Rat

* Requires special conditions – refer to datasheet



PrecisionAb™ WB validated antibodies

For those studying cell signaling pathways by WB analysis we offer PrecisionAb WB validated antibodies. Each PrecisionAb product has been carefully selected after extensive performance testing in up to 12 different cell lysates.

bio-rad-antibodies.com



Bio-Rad
Laboratories, Inc.