



Antibodies to Ovine CD Markers

As a leading supplier of top publication cited veterinary immunology reagents, Bio-Rad provides the widest selection of antibodies raised directly against ovine CD marker antigens as shown in the table below. Our antibodies enable investigations into the sheep adaptive and innate immune systems to elucidate the functions of T, B, and dendritic cells, and macrophages. Continuing Bio-Rad's tradition of manufacturing validated reagents to further research into basic immune functions, diagnostics, and vaccine development.

Ovine CD Marker Antibodies

Specificity	Clone	Applications	Catalog Number	Format	T Cell	B Cell	Dendritic Cell	NK Cell	Monocyte/Macrophage
CD1	20.27	FC, IF/ICC, IHC-F, IP	MCA2212	Pur., A647	✓	✓	✓		
CD4	44.38	FC, IF/ICC, IHC-F, IP	MCA2213GA	Pur., A647, FITC, RPE	✓				
CD8	38.65	FC, IHC-F, IP	MCA2216GA	Pur., FITC, RPE	✓				
CD14	VPM66	E, FC, IP	MCA5939GA	Pur.					✓
CD14	VPM67	E, FC, IP, WB	MCA5940GA	Pur.					✓
CD14	VPM65	E, FC, IHC-F, IP	MCA920GA	Pur.					✓
CD25	9.14	FC, IHC-F, IP	MCA2218GA	Pur., FITC	✓				
CD31	CO.3E1D4	FC, IP	MCA1097GA	Pur., FITC					
CD16-Like	VPM64	E, FC, IHC-F, IP	MCA919GA	Pur.					✓
CD32-Like	VPM63	FC, IHC-F	MCA918GA	Pur.					✓
CD41/CD61	CO.35E4	E, FC, IP	MCA1095GA	Pur.					
CD43	CO.44B8	FC	MCA1096GA	Pur.	✓	✓			✓
CD44	25.32	FC, IHC-F, IP	MCA2219GA	Pur., FITC	✓	✓			✓
CD45	1.11.32	FC, IP, IHC-F, P	MCA2220GA	Pur., B, FITC, RPE	✓	✓			✓
CD45	VPM18	FC, IHC-F, IP	MCA896GA	Pur.	✓	✓			✓
CD45R	20.96	FC, IHC-F, IP	MCA2221	Pur., RPE	✓	✓			
CD230	ROS-BH1	FC, IHC-P, WB	MCA6008GA	Pur.	✓	✓	✓	✓	✓
CD230	ROS-BC6	FC, IHC-P, WB	MCA6009GA	Pur.	✓	✓	✓	✓	
CD230	ROS-1H9	FC, IHC-P, WB	MCA6010GA	Pur.	✓	✓	✓	✓	✓
CD230 (PrPSc)	2G11	E, IHC-P	MCA2460	Pur.	✓	✓	✓	✓	✓
CD335	EC1.1	FC, IHC-F, IHC-P	MCA5933GA	Pur., RPE				✓	

Cross-reactive Ovine CD Marker Antibodies

Cross-reactive Ovine CD Markers

In addition to antibodies raised directly against ovine antigens, we offer CD marker antibodies that have been qualified as ovine cross-reactive* to enable further investigation of the sheep immune system and complement Bio-Rad's antibodies to native ovine antigens.

Specificity	Clone	Applications	Catalog Number	Format
CD1w2	CC13	FC	MCA1646G	Pur.
CD1w2	CC20	FC, IHC-F, IP	MCA2058G	Pur., RPE
CD1w2	CC14	FC, IHC-F, IP	MCA831G	Pur.
CD1w3	CC43	FC, IP	MCA1647G	Pur.
CD5	CC17	FC, IHC-F, IP	MCA835GA	Pur.
CD8	CC63	FC, IF/ICC, IHC-F, IP, IHC-P	MCA837GA	Pur., A647, FITC, RPE
CD8 BETA	CC58	FC, IP	MCA1654G	Pur., RPE
CD11a	BL1H8	FC	MCA2308F	FITC
CD11b	CC126	FC, IHC-F, IP	MCA1425GA	Pur., FITC
CD14	TÜK4	E, FC, FN, WB	MCA1568GA	Pur., A647, A700, B., LE, FITC, PB, RPE, RPE-A647, RPE-A750
CD14	CC-G33	FC, IF/ICC	MCA2678GA	Pur., FITC
CD14	61D3	FC, IF/ICC	MCA2804C	RPE-CY5, RPE-CY5.5
CD16	KD1	FC, FN	MCA5665GA	Pur., FITC
CD21	LB21	FC, IHC-F, IP	MCA1195	Pur., FITC, RPE
CD21	CC21	FC, IF/ICC, IHC-F, IP	MCA1424GA	Pur., FITC, RPE
CD22	Mc64-12	FC	MCA1380FT	FITC, RPE
CD25	IL-A111	FC, IHC-F, IP	MCA2430GA	Pur., FITC, RPE
CD26	CC69	FC, IP	MCA1652G	Pur., A647
CD27	LT27	FC, IP	MCA755	Pur., A647, FITC, Pres. Fr., RPE
CD32	CCG36	FC, IHC-F	MCA5918GA	Pur., FITC, RPE
CD40	IL-A156	FC, FN	MCA2431GA	Pur., RPE
CD47	BRIC126	FC, FN, IHC-F, IP, WB	MCA911	Pur.
CD49f	NKI-GoH3	FC, IHC-F, FN, IP	MCA699GA	Pur., A647, B, FITC, LE, RPE
CD62L	CC32	FC	MCA1649G	Pur., FITC
CD62P	Psel.KO.2.5	FC, IP	MCA2418	Pur., A488, RPE
CD62P	Psel.KO.2.7	FC, IHC-F, IP	MCA2419	Pur., A488, A647, RPE
CD62P	Psel.KO.2.12	FC, IHC-F, IP	MCA2420	Pur., A488, RPE
CD80	IL-A159	FC	MCA2436GA	Pur., FITC, RPE
CD81	1D6	FC, FN, IF/ICC, IP, IHC-P, WB	MCA1847	Pur., FITC, LE
CD86	IL-A190	FC	MCA2437GA	Pur., FITC, RPE
CD163	EDHu-1	E, FC, IF/ICC, IHC-F, IHC-P, WB	MCA1853	Pur., FITC
CD205	CC98	FC, IHC-F, IP	MCA1651GA	Pur., FITC
CD205	IL-A114	FC, IHC-F	MCA2450GA	Pur, FITC, RPE
CD209		IHC-F, IF/ICC, WB	AHP627	Pur.
CD230		E, IHC-P, WB	AHP498	Serum
CD282	12542	FC	HCA151	Pur., A647, FITC

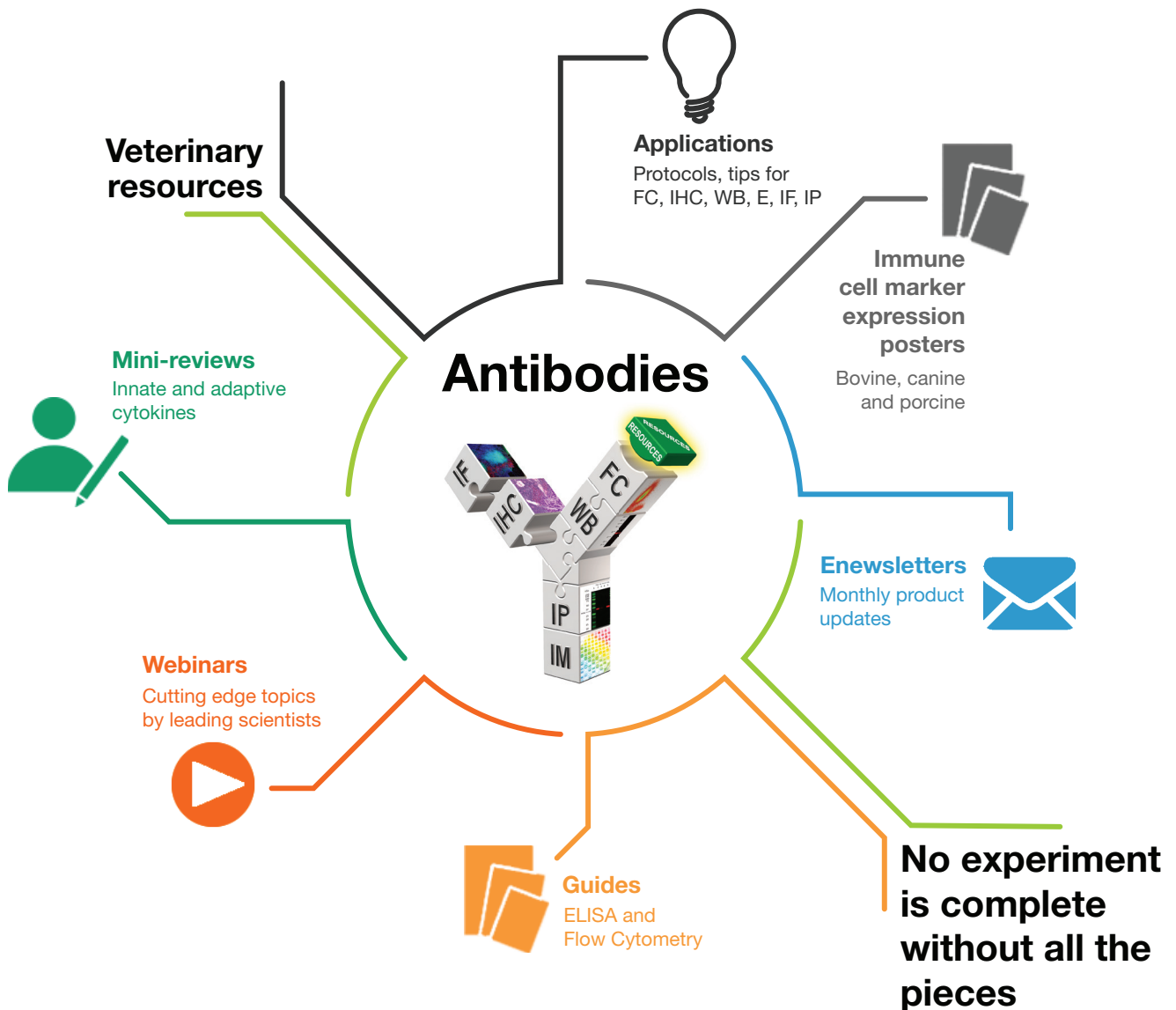
Cross-reactive Ovine CD Marker Antibodies

Cross-reactive Ovine CD Markers Continued

Specificity	Clone	Applications	Catalog Number	Format
CD205	CC98	FC, IHC-F, IP	MCA1651GA	Pur., FITC
CD205	IL-A114	FC, IHC-F	MCA2450GA	Pur, FITC, RPE
CD209		IHC-F, IF/ICC, WB	AHP627	Pur.
CD230		E, IHC-P, WB	AHP498	Serum
CD282	12542	FC	HCA151	Pur., A647, FITC

* Cross-reactivity data is derived from testing within our laboratories, peer-reviewed publications or personal communications from the originators.

Abbreviations: Axxx = Alexa Fluor®; B., biotin; E, ELISA; FC, flow cytometry; FN, functional assay; IF/ICC, immunofluorescence/immunocytochemistry; IHC-F, immunohistochemistry – frozen; IHC-P, immunohistochemistry – paraffin; IP, immunoprecipitation; LE, low endotoxin; PB, Pacific Blue™; Pres. Fr., Preservative Free; Pur., purified; S/N, supernatant; WB, western blotting.



Visit bio-rad-antibodies.com/vet to browse our entire range of veterinary antibodies, and other available veterinary resources.

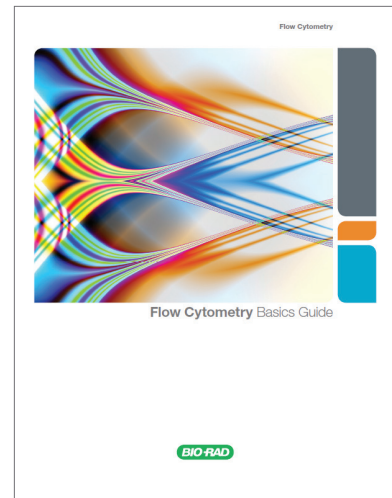


Introduction to Flow Cytometry Basics Guide:

We have updated our popular flow cytometry guide which still contains a basic overview of all the important facets of flow cytometry without delving too deeply into the complex mathematics and physics.

We have also included new sections on controls, experimental design, multicolor panel building, uses and new technology in flow cytometry and more.

Download or order your free guide at bio-rad-antibodies.com/flow-cytometry-guide



Visit bio-rad-antibodies.com/veterinary-antibodies for more information.



**Bio-Rad
Laboratories, Inc.**

Life Science
Group

Web site www.bio-rad-antibodies.com
Americas Toll free 1 800 265 7376 (USA & Canada) Americas 1 919 878 7978 Email: antibody_sales_us@bio-rad.com
Europe 49 89 80 90 95 21 Email: antibody_sales_de@bio-rad.com
UK & Worldwide 44 1865 852700 Email: antibody_sales_uk@bio-rad.com