



Antibodies to Equine CD Markers

As a leading supplier of top publication cited veterinary immunology reagents, Bio-Rad provides the broadest selection of antibodies raised directly against equine CD marker antigens as shown in the table below. Our antibodies enable investigations into the horse immune response. Continuing Bio-Rad's tradition of manufacturing validated reagents to further research into veterinary species' basic functions, diagnostics, and vaccine development.

Equine CD Marker Antibodies

| Specificity | Clone | Applications | Catalog Number | Format | T Cell | B Cell | Dendritic Cell | NK Cell | Monocyte/Macrophage |
|----------------|--------|---------------|----------------|----------------------|--------|--------|----------------|---------|---------------------|
| CD2 | Mac288 | FC, IHC-F | MCA1278 | S/N | ✓ | | | | |
| CD4 | CVS4 | FC, IHC-F, IP | MCA1078GA | Pur., FITC, RPE, S/N | ✓ | | | | |
| CD5 | CVS5 | FC, IHC-F, IP | MCA1079GA | Pur., FITC, RPE | ✓ | ✓ | | | |
| CD8 | CVS21 | FC | MCA1080GA | Pur., FITC, RPE | ✓ | | | | |
| CD8 | CVS8 | FC, IHC-F, IP | MCA2385GA | Pur., FITC, RPE | ✓ | | | | |
| CD11a/ CD18 | CVS9 | FC, IHC-F | MCA1081GA | Pur., FITC, RPE, S/N | ✓ | ✓ | ✓ | ✓ | ✓ |
| CD13 | CVS19 | FC, IHC-F, IP | MCA1084GA | Pur., FITC, RPE | | | ✓ | | ✓ |
| CD44 | CVS18 | FC, IHC-F | MCA1082GA | Pur., FITC, RPE, S/N | ✓ | ✓ | ✓ | ✓ | ✓ |

Cross-reactive Equine CD Markers

In addition to antibodies raised directly against equine antigens, we offer CD marker antibodies that have been qualified as equine cross-reactive* to enable further investigation of the horse immune system and complement Bio-Rad's antibodies to native equine antigens.

| Specificity | Clone | Applications | Catalog Number | Format |
|-------------|---------|--------------------------|----------------|----------------------------|
| CD1w2 | CC20 | FC, IHC-F, IP | MCA2058G | Pur., RPE |
| CD3 | CD3-12 | FC, IF, IHC-F, IHC-P, WB | MCA1477 | Pur., A488, A647, FITC, PB |
| CD9 | MM2/57 | FC, IHC-F, WB | MCA469GA | Pur., A647, B., FITC, RPE |
| CD16 | KD1 | FC, FN | MCA5665GA | Pur., FITC |
| CD18 | CA1.4E9 | FC, IF/ICC, IHC-F, IP | MCA1780GA | Pur., A647 |
| CD21 | CA2.1D6 | FC, IHC-F, IP | MCA1781R | Pur., A647, RPE |
| CD21 | Bu33 | FC | MCA2499 | Pur. |
| CD41/CD61 | CO.35E4 | E, FC, IP | MCA1095GA | Pur. |
| CD44 | IM7 | E, FC, IP, IHC-F, IHC-P | MCA4703 | Pur. |

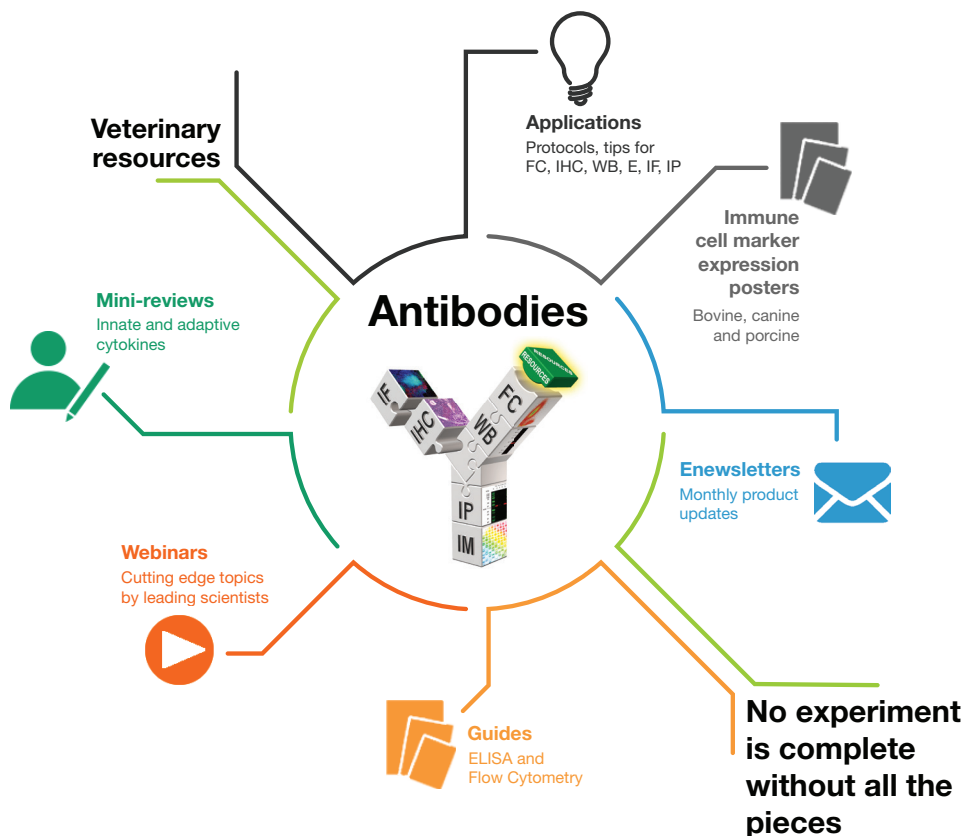
Cross-reactive Equine CD Marker Antibodies

Cross-reactive Equine CD Markers Continued

| Specificity | Clone | Applications | Catalog Number | Format |
|-------------|-------------|--------------------------|----------------|-----------------------------|
| CD49d | HP2/1 | FC, FN, IHC-F, IP | MCA697GA | Pur. |
| CD61 | JM2E5 | FC, IHC-F, IP, IHC-P, WB | MCA2263GA | Pur., FITC |
| CD62P | Psel.KO.2.7 | FC, IHC-F, IP | MCA2419 | Pur., A488, A647, RPE |
| CD79a | HM57 | FC, IHC-F, IHC-P, WB | MCA2538GA | Pur., A647, RPE |
| CD105 | SN6 | FC, IHC-F, IP, WB | MCA1557 | Pur., A488, A647, FITC, RPE |
| CD282 | | IHC-P, WB | AHP1635 | Pur. |

Abbreviations: Axxx = Alexa Fluor®; B., biotin; E, ELISA; FC, flow cytometry; FN, functional assay; IF/ICC, immunofluorescence/immunocytochemistry; IHC-F, immunohistochemistry – frozen; IHC-P, immunohistochemistry – paraffin; IP, immunoprecipitation; LE, low endotoxin; PB, Pacific Blue™; Pres. Fr., Preservative Free; Pur., purified; S/N, supernatant; WB, western blotting.

* Cross-reactivity data is derived from testing within our laboratories, peer-reviewed publications or personal communications from the originators.



Visit bio-rad-antibodies.com/veterinary-antibodies for more information.



**Bio-Rad
Laboratories, Inc.**

Life Science
Group

Web site www.bio-rad-antibodies.com
Americas Toll free 1 800 265 7376 (USA & Canada) **Americas** 1 919 878 7978 **Email:** antibody_sales_us@bio-rad.com
Europe 49 89 80 90 95 21 **Email:** antibody_sales_de@bio-rad.com
UK & Worldwide 44 1865 852700 **Email:** antibody_sales_uk@bio-rad.com