



STARBRIGHT DYES

StarBright Blue 700 Dye

StarBright Dyes are unique, fluorescent nanoparticles, conjugated to Bio-Rad's highly validated antibodies. Developed specifically for flow cytometry to give you exceptional brightness with exacting excitation and emission.

The brightness allows easy resolution of rare populations and low density antigens while maintaining the flexibility to fit into any multicolor panel.

StarBright Blue 700 (SBB700) is excitable by the blue 488 nm laser and has a maximal emission at 700 nm. Minimal excitation by other lasers and a narrow unique emission profile make StarBright Blue 700 (Figure 1) perfect for inclusion in multicolor panels in conventional and spectral flow cytometry.

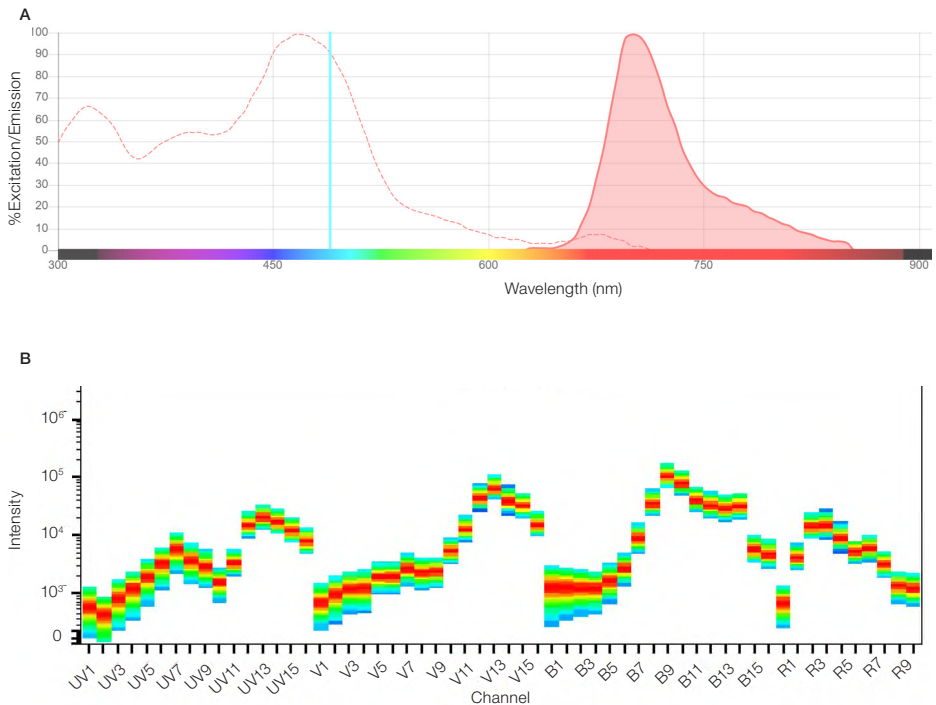


Fig. 1. Excitation and emission spectra for SBB700. **A**, excitation and emission profile; **B**, full spectral profile.

Due to its unrivalled brightness with reduced spillover, StarBright Blue 700 Dye (SBB700) is the ideal replacement for fluorophores such as PerCP, PerCP-Cy5.5, and Brilliant Blue 700, which can all be detected with a 692/80 filter (or similar), when building multicolor panels. In addition, StarBright Dyes perform equally well in all buffers and do not require a special buffer, even when included with other StarBright or polymer dyes, allowing easy addition to existing panels. High lot-to-lot reproducibility, resistance to photobleaching, and stability makes SBV700 an excellent choice for your flow cytometry experiments (Figure 2).

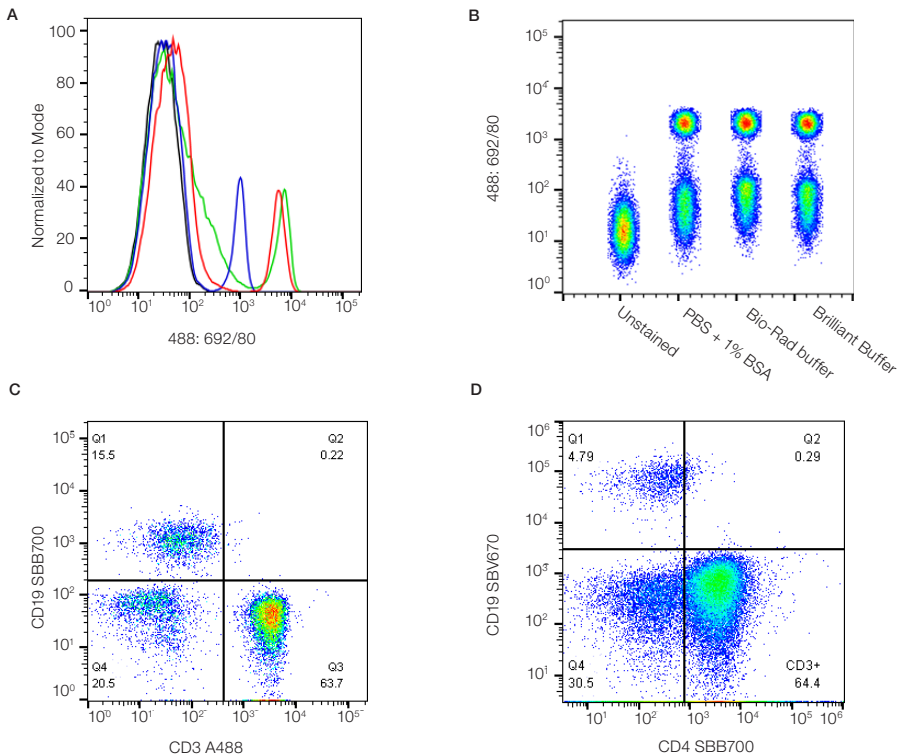


Fig 2. StarBright Blue 700 Dye features. Peripheral blood was stained for CD4. **A**, StarBright Blue 700 Dye (red) is as bright or brighter than other similar dyes such as BB700 (green) or PerCP-Cy5.5 (blue). **B**, it can also be used in any buffer without a drop in performance **C**, SBB700 can be used with organic fluorophores and **D**, other StarBright Dyes without the requirement for a special staining buffer.

See how the features of these new StarBright Dyes can enhance your flow cytometry experiments:

bio-rad-antibodies.com/SBB700

StarBright Antibodies – Discover more with Bio-Rad StarBright Dyes.

Human Marker	Catalog #	Formats	Applications
CD2	MCA1194	A647, biotin, FITC, pur., SBV515, SBB700	IHC-F, FC, FN, IP
CD3	MCA463	A488, A647, A700, APC, FITC, PB, pur., PE, PE-A647, PE-A750, PE-Cy5, PE-Cy5.5, SBV515, SBB700	IHC-F, FC, FN
CD4	MCA1267	A488, A647, A700, AMO, FITC, PB, pur., PE, PE-A647, SBV515, SBB700	IHC-F, FC, FN
CD8	MCA1226	A488, A647, A700, AMO, APC, FITC, PB, pur., PE, PE-A647, SBV515, SBB700	IHC-F, FC, IP
CD10	MCA1556	A488, A647, A700, AMO, APC, FITC, pur., SBV515, SBB700	IHC-F, FC, IP, WB
CD14	MCA1568	A488, A647, A700, AMO, APC, FITC, pur., SBV515, SBB700	E, FC, FN, IF, WB
CD16	MCA2537	A488, A647, A700, biotin, PB, PE, pur., SBV515, SBB700	IHC-F, FC, IHC-P
CD19	MCA1940	A488, A647, A700, AMO, APC, biotin, FITC, PB, pur., PE, PE-A647, SBV515, SBB700	IHC-F, FC, IP
CD20	MCA1710	A488, A647, A700, AMO, APC, FITC, PB, pur., PE, PE-Cy5, SBV515, SBB700	IHC-F, FC
CD25	MCA2127	A488, A647, FITC, pur., PE, SBV515, SBB700	FC
CD27	MCA755	A647, FITC, pur., PE, SBV515, SBB700	FC, IP
CD28	MCA709	A488, A647, FITC, PB, pur., PE, SBV515, SBB700	IHC-F, FC, FN
CD31	MCA1738	A647, A700, biotin, FITC, PB, pur., PE, SBV515, SBB700	FC, IF, IP
CD33	MCA1271	A488, A647, A700, AMO, APC, FITC, pur., PE, SBV515, SBB700	FC, IP, WB
CD38	MCA1019	A488, A647, AMO, biotin, pur., PE, PE-A750, SBV515, SBB700	IHC-F, FC, IP
CD45	MCA87	A488, A647, A700, AMO, APC, biotin, FITC, PB, PerCP, pur., PE, PE-A657, PE-A750, PE-Cy5.5, SBV515, SBB700	IHC-F, FC, IP, IHC-P
CD45RA	MCA88	A488, A647, A700, AMO, FITC, PB, pur., PE, PE-A647, SBV515, SBB700	IHC-F, FC, IHC-P
CD45RO	MCA461	FITC, pur., PE, PE-Cy5, SBV515, SBB700	IHC-F, FC, IP, IHC-P
CD62L	MCA1076	A647, A700, FITC, PB, pur., PE, SBV515, SBB700	IHC-F, FC, IP, IHC-P
CD69	MCA2806	A647, FITC, pur., PE, PE-Cy5, SBV515, SBB700	IHC-F, FC, IF
CD105	MCA1557	A488, A647, FITC, PE, PE-A647, pur., SBV515, SBB700	IHC-F, FC, IP, WB
HLA-ABC	MCA81	A488, A647, A700, AMO, biotin, FITC, PB, pur., PE, PE-A647, PE-A750, SBV515, SBB700	IHC-F, E, FC, FN, IF, IP
HLADP/DQ/DR	MCA477	AMO, FITC, pur., PE, SBV515, SBB700	FC, IHC-F, IHC-P

Mouse Marker	Catalog #	Formats	Applications
CD3	MCA500	A488, A647, A700, APC, FITC, PB, pur., PE, PE-A750, SBV515, SBB700	IHC-F, FC
CD4	MCA2691	A488, A647, A700, AMO, biotin, FITC, PB, pur., PE, PE-A750, SBV515, SBB700	IHC-F, FC
CD8	MCA609	A488, A647, A700, AMO, APC, FITC, PB, pur., PE, PE-A647, PE-A750, SBV515, SBB700	IHC-F, FC, IF
CD11b	MCA711	A647, A700, FITC, PB, pur., PE, PE-A647, PE-A750, SBV515, SBB700	IHC-F, FC, FN, IF, IP
CD19	MCA1439	A488, A647, A700, biotin, PB, pur., PE, PE-A647, PE-Cy5, SBV515, SBB700	IHC-F, FC, IP
CD25	MCA1260	A488, A647, A700, FITC, pur., PE, SBV515, SBB700	IHC-F, FC, IP
CD45R	MCA1258	A488, A647, A700, AMO, FITC, pur., PE, PE-A647, PE-A750, PE-Cy7, SBV515, SBB700	IHC-F, FC, IF, IP, IHC-P
CD117	MCA1365	A488, A647, pur., PE, SBV515, SBB700	FC
CD161	MCA1266	A647, FITC, pur., SBV515, SBB700	CT, FC, FN, IP
F4/80	MCA497	A488, A647, A700, AMO, APC, biotin, FITC, PB, pur., PE, PE-A647, PE-A750, SBV515, SBB700	IHC-F, EM, FC, IF, IP, IHC-P, R, IHC-R, WB
Ly-6C	MCA2389	A488, A647, A700, biotin, FITC, PB, pur., PE, SBV515, SBB700	IHC-F, FC, IP

Also available:

	Catalog #	Formats	Applications
Streptavidin	STAR210	SBV515, SBB700	FC

Abbreviations: CT, cytotoxic assay; E, ELISA; EM, immunoelectron microscopy; FC, flow cytometry; FN, functional assay; IF, immunofluorescence; IHC-F, immunohistology – frozen sections; IHC-P, immunohistology – paraffin sections; IP, immunoprecipitation; IHC-R, resin immunohistological sections; R, radioimmunoassay; WB, western blotting.

Be the First to Know

Sign up to our emailers at bio-rad-antibodies.com/star, to be the first to hear when new products are released, including new StarBright Dyes.

Bio-Rad is a trademark of Bio-Rad Laboratories, Inc. in certain jurisdictions. All trademarks used herein are the property of their respective owner.



**Bio-Rad
Laboratories, Inc.**

