



Stain Index for StarBright Violet Dyes

Quick Guide

StarBright Dyes are new, proprietary fluorescent nanoparticles conjugated to Bio-Rad's highly validated antibodies. Designed with exceptional brightness, narrow excitation and emission, stability, and with high lot-to-lot reproducibility.

This handy reference guide shows how the stain index of StarBright Violet Dyes compares to other violet laser-excitable fluorescent dyes that have similar maximal emissions.

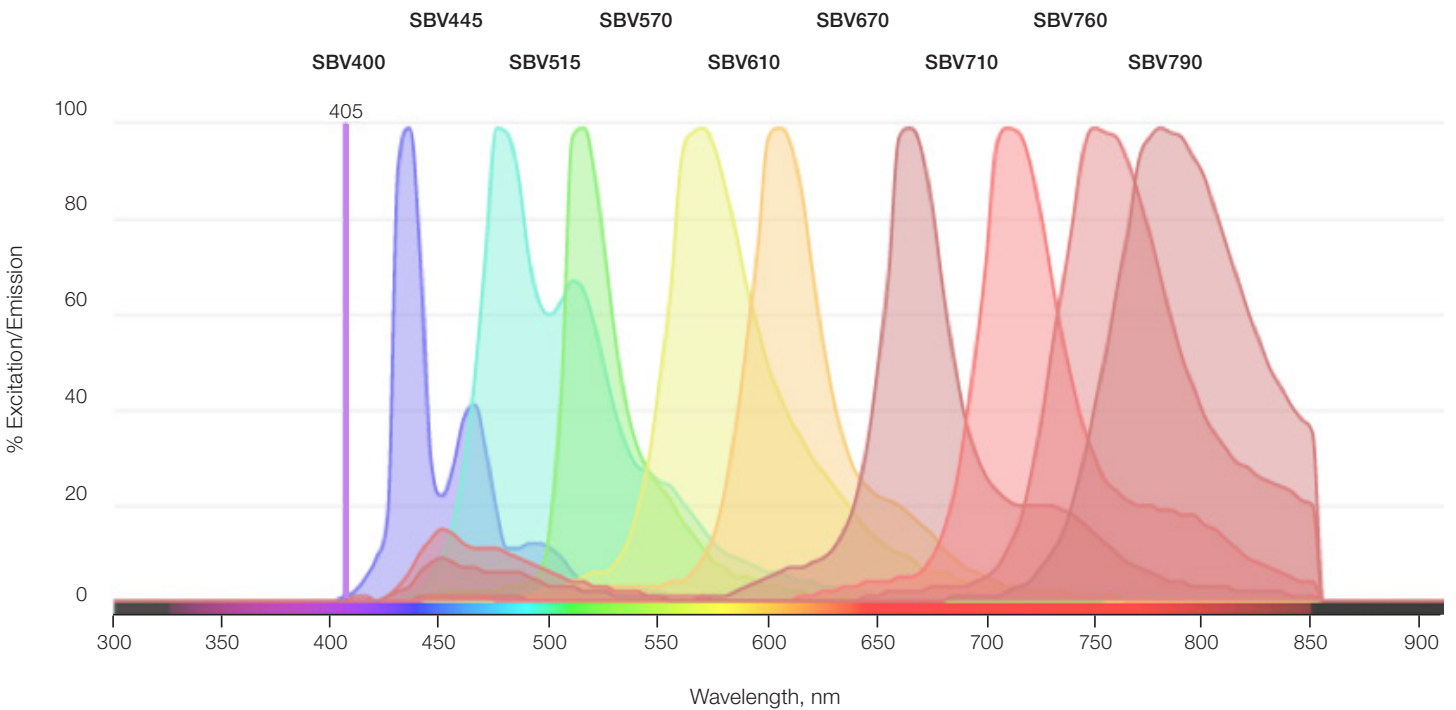


Fig. 1. Excitation and emission spectra of StarBright Violet Dyes.

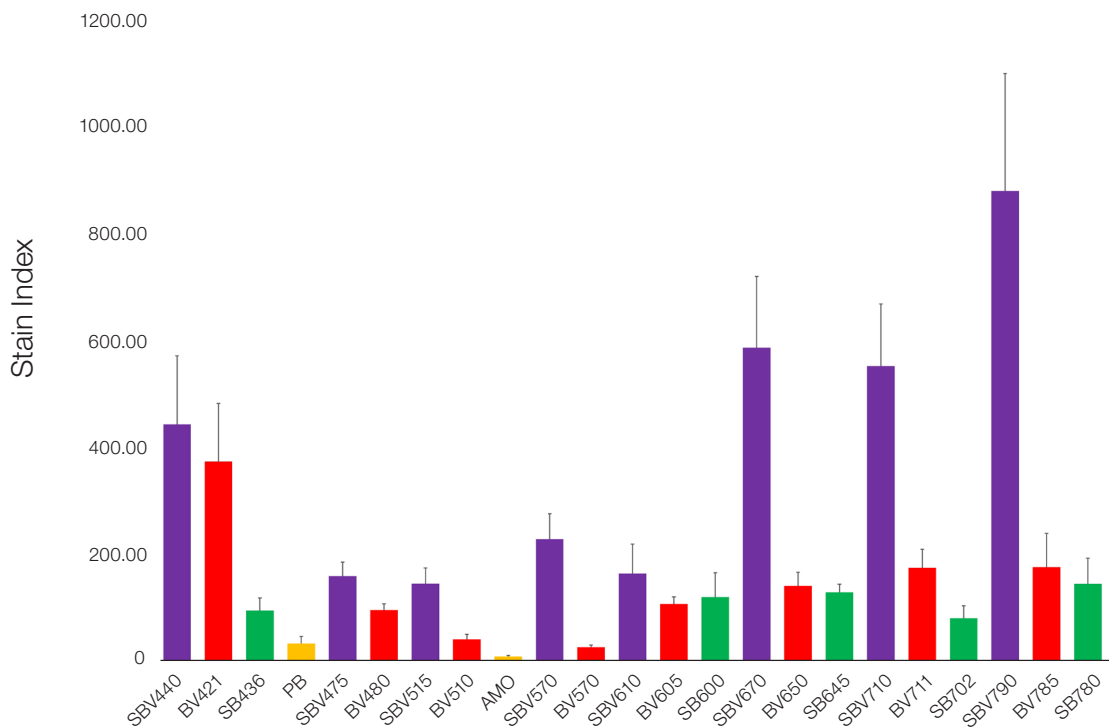
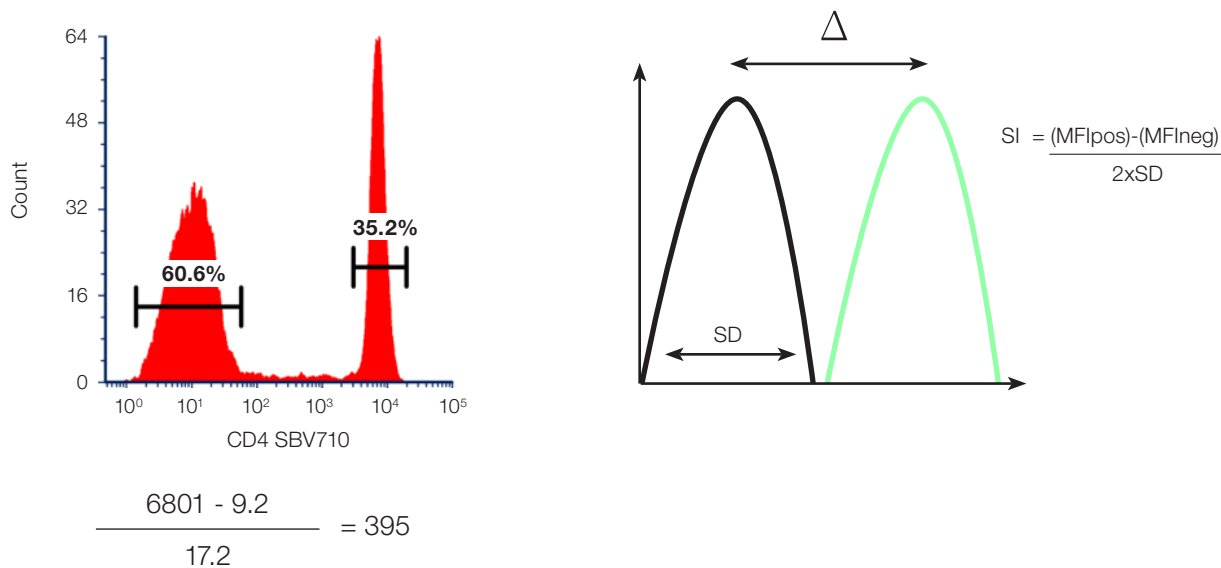


Fig. 2. Stain index comparison. Stain index of human peripheral blood stained with various 405 nm excitable StarBright Violet, Brilliant Violet, Super Bright, and conventional dyes conjugated to CD4 (MCA1267). Data generated are the average of 3–4 donors, antibodies were titrated before use and analyzed on the ZE5 Cell Analyzer. Red, StarBright Dyes; purple, Brilliant Violet; green, Super Bright; yellow, non-polymer dyes. AMO, Amethyst Orange; PB, Pacific Blue; SB, Super Bright; SBV, StarBright Violet Dye.

How to generate a stain index



Visit bio-rad-antibodies.com/stain-index for more information.

BIO-RAD is a trademark of Bio-Rad Laboratories, Inc. All trademarks used herein are the property of their respective owner.



**Bio-Rad
Laboratories, Inc.**