



STARBRIGHT DYES

StarBright UltraViolet 400 Dye

StarBright Dyes are unique, fluorescent nanoparticles, conjugated to Bio-Rad's flow cytometry tested antibodies. Developed specifically for flow cytometry using the ZE5 Cell Analyzer, but suitable for use on all flow cytometers, providing exceptional brightness with narrow excitation and emission.

The brightness allows easy resolution of positive cells including rare populations and low density antigens while maintaining the flexibility to fit into any multicolor panel.

StarBright UltraViolet 400 (SBUV400) Dye is excitable by the ultraviolet 355 nm laser and has a maximal emission at 394 nm. Minimal excitation by other lasers and a narrow emission profile make SBUV400 (Figure 1) perfect for inclusion in multicolor panels in conventional and spectral flow cytometry.

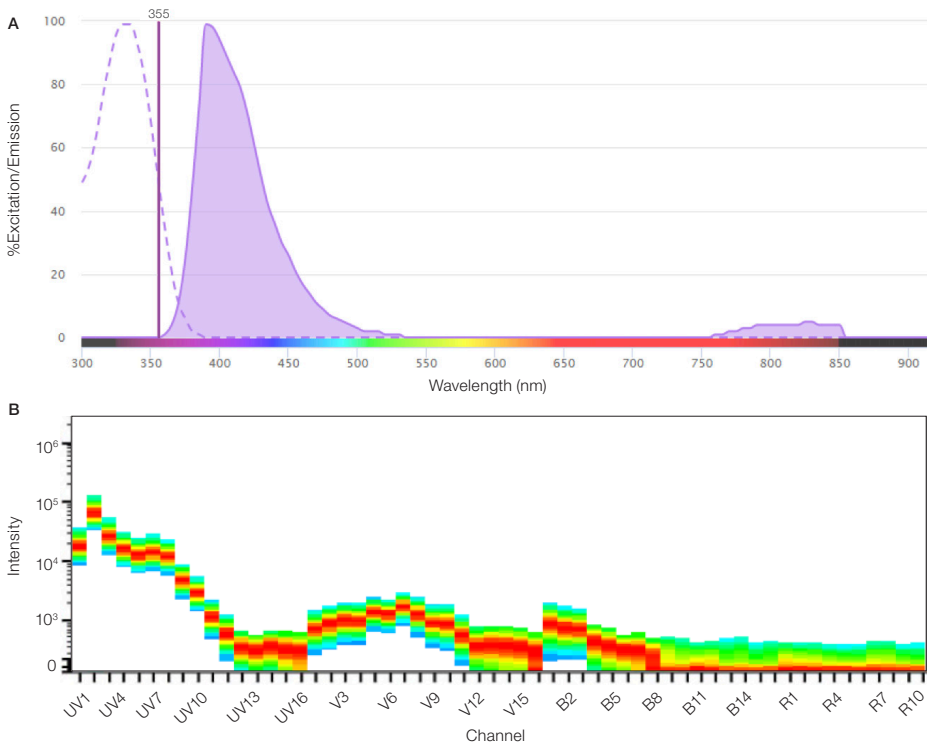


Fig. 1. Excitation and emission spectra for SBUV400. A, excitation and emission profile; B, full spectral profile.

Due to its unrivaled brightness with reduced spillover, StarBright UltraViolet 400 Dye is the ideal replacement for dyes such as Brilliant Ultraviolet 395. It can be detected with a 387/11 filter (or similar) when building conventional multicolor panels, but is also suitable for use in spectral panels.

StarBright Dyes perform equally well in all buffers and do not require a special buffer, even when combined with other StarBright Dyes or polymer dyes, enabling easy addition to existing panels. The performance and flexibility of StarBright UltraViolet 400 Dye is highlighted in Figure 2. Here we show that SBUV400 can be combined with other dyes, including other StarBright Dyes, without the requirement of a special buffer, and giving clear and bright staining in both conventional and full spectrum flow cytometry.

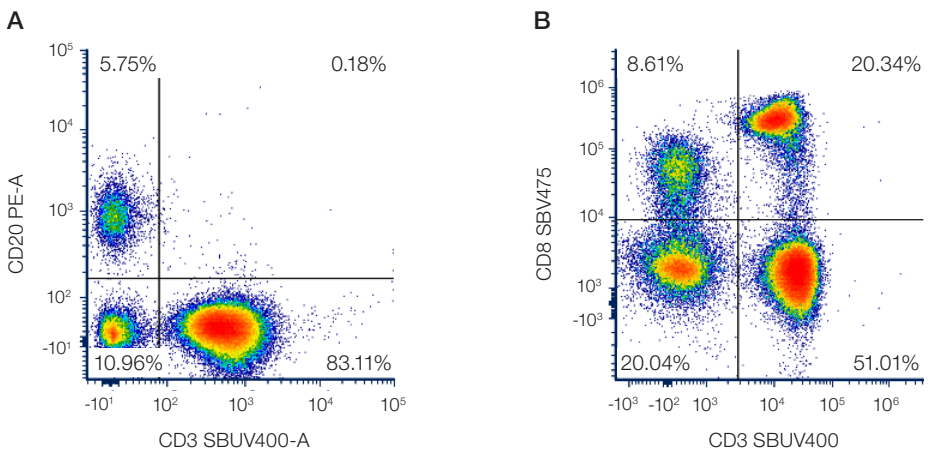


Fig. 2. StarBright UltraViolet 400 Dye performance in conventional and spectral flow cytometry. Human peripheral blood was stained for CD3SBUV400 (Cat. #MCA463SBUV400) and **A**, CD20PE (#MCA1710PE) or **B**, CD8SBV475 (#MCA1226SBV475) and analyzed by full spectrum flow cytometry and conventional flow cytometry respectively.

See how the performance of new StarBright Dyes can enhance your flow cytometry experiments: bio-rad-antibodies.com/StarBright

StarBright Antibodies – Discover more with Bio-Rad StarBright Dyes.

Human Marker	Catalog #	Formats	Applications
CD2	MCA1194	A647, biotin, FITC, pur., SBV440, SBV475, SBV515, SBV570, SBV610, SBV670, SBB700, SBV710, SBV790	FC, FN, IHC-F, IP
CD3	MCA463	A488, A647, A700, APC, FITC, PB, pur., PE, PE-A647, PE-A750, PE-Cy5, PE-Cy5.5, SBV440, SBV475, SBV515, SBV570, SBV610, SBV670, SBB700, SBV710, SBV790	FC, FN, IHC-F
CD4	MCA1267	A488, A647, A700, AMO, FITC, PB, pur., PE, PE-A647, SBV440, SBV475, SBV515, SBV570, SBV610, SBV670, SBB700, SBV710, SBV790	FC, FN, IHC-F
CD8	MCA1226	A488, A647, A700, AMO, APC, FITC, PB, pur., PE, PE-A647, SBV440, SBV475, SBV515, SBV570, SBV610, SBV670, SBB700, SBV710, SBV790	FC, IHC-F, IP
CD10	MCA1556	A488, A647, A700, AMO, APC, FITC, pur., SBV440, SBV475, SBV515, SBV570, SBV610, SBV670, SBB700, SBV710, SBV790	FC, IHC-F, IP, WB
CD14	MCA1568	A488, A647, A700, AMO, APC, FITC, pur, SBV440, SBV475, SBV515, SBV570, SBV610, SBV670, SBB700, SBV710, SBV790	FC, IHC-F, IP, WB
CD19	MCA1940	A488, A647, A700, AMO, APC, biotin, FITC, PB, pur., PE, PE-A647, SBV440, SBV475, SBV515, SBV570, SBV610, SBV670, SBB700, SBV710, SBV790	FC, IHC-F, IP
CD20	MCA1710	A488, A647, A700, AMO, APC, FITC, PB, pur., PE, PE-Cy5, SBV440, SBV475, SBV515, SBV570, SBV610, SBV670, SBB700, SBV790	FC, IHC-F
CD25	MCA2127	A488, A647, FITC, pur., PE, SBV440, SBV475, SBV515, SBV570, SBV610, SBV670, SBB700, SBV710, SBV790	FC
CD27	MCA755	A647, FITC, pur., PE, SBV440, SBV475, SBV515, SBV570, SBV610, SBV670, SBB700, SBV710, SBV790	FC, IP
CD28	MCA709	A488, A647, FITC, PB, pur., PE, SBV440, SBV475, SBV515, SBV570, SBV610, SBV670, SBB700, SBV710, SBV790	FC, FN, IHC-F
CD31	MCA1738	A647, A700, biotin, FITC, PB, pur., PE, SBV440, SBV475, SBV515, SBV570, SBV610, SBV670, SBB700, SBV710, SBV790	FC, IF, IP
CD33	MCA1271	A488, A647, A700, AMO, APC, FITC, pur., PE, SBV440, SBV475, SBV515, SBV570, SBV610, SBV670, SBB700, SBV710, SBV790	FC, IP, WB
CD38	MCA1019	A488, A647, AMO, biotin, pur., PE, PE-A750, SBV440, SBV475, SBV515, SBV570, SBV610, SBV670, SBB700, SBV710, SBV790	FC, IHC-F, IP
CD45	MCA87	A488, A647, A700, AMO, APC, biotin, FITC, PB, PerCP, pur., PE, PE-A657, PE-A750, PE-Cy5.5, SBV440, SBV475, SBV515, SBV570, SBV610, SBV670, SBB700, SBV710, SBV790	FC, IHC-F, IHC-P, IP
CD45RA	MCA88	A488, A647, A700, AMO, FITC, PB, pur., PE, PE-A647, SBV440, SBV475, SBV515, SBV570, SBV610, SBV670, SBB700, SBV710, SBV790	FC, IHC-F, IHC-P
CD45RO	MCA461	FITC, pur., PE, PE-Cy5, SBV440, SBV475, SBV515, SBV570, SBV610, SBV670, SBB700, SBV710, SBV790	FC, IHC-F, IHC-P, IP
CD62L	MCA1076	A647, A700, FITC, PB, pur., PE, SBV440, SBV475, SBV515, SBV570, SBV610, SBV670, SBB700, SBV710, SBV790	FC, IHC-F, IHC-P, IP
CD69	MCA2806	A647, FITC, pur., PE, PE-Cy5, SBV440, SBV475, SBV515, SBV570, SBV610, SBV670, SBB700, SBV710, SBV790	FC, IF, IHC-F
CD105	MCA1557	A488, A647, FITC, pur., PE, PE-A647, SBV440, SBV475, SBV515, SBV570, SBV610, SBV670, SBB700, SBV710, SBV790	FC, IHC-F, IP, WB
HLA-ABC	MCA81	A488, A647, A700, AMO, biotin, FITC, PB, pur., PE, PE-A647, PE-A750, SBV440, SBV475, SBV515, SBV570, SBV610, SBV670, SBB700	E, FC, FN, IF, IHC-F, IP
HLADP/DQ/DR	MCA477	AMO, FITC, pur., PE, SBV440, SBV475, SBV515, SBV570, SBV610, SBV670, SBB700, SBV710, SBV790	FC, FN, IHC-P

Mouse Marker	Catalog #	Formats	Applications
CD3	MCA500	A488, A647, A700, APC, FITC, PB, pur., PE, PE-A750, SBV440, SBV475, SBV515, SBV570, SBV610, SBV670, SBB700, SBV710, SBV790	FC, IHC-F
CD4	MCA2691	A488, A647, A700, AMO, Biotin, FITC, PB, pur., PE, PE-A750, SBV440, SBV475, SBV515, SBV570, SBV610, SBV670, SBB700, SBV710, SBV790	FC, IHC-F
CD8	MCA609	A488, A647, A700, AMO, APC, FITC, PB, pur., PE, PE-A647, PE-A750, SBV440, SBV475, SBV515, SBV570, SBV610, SBV670, SBB700, SBV710, SBV790	FC, IF, IHC-F
CD11b	MCA711	A647, A700, FITC, PB, pur., PE, PE-A647, PE-A750, SBV440, SBV475, SBV515, SBV570, SBV610, SBV670, SBB700, SBV710, SBV790	FC, FN, IF, IHC-F, IP
CD19	MCA1439	A488, A647, A700, biotin, PB, pur., PE, PE-A647, PE-Cy5, SBV440, SBV475, SBV515, SBV570, SBV610, SBV670, SBB700, SBV710, SBV790	FC, IHC-F, IP
CD25	MCA1260	A488, A647, A700, FITC, pur., PE, SBV440, SBV475, SBV515, SBV570, SBV610, SBV670, SBB700, SBV710, SBV790	FC, IHC-F, IP
CD45	MCA1031	A488, A647, A700, AMO, FITC, pur., PE, SBV440, SBV475, SBV515, SBV570, SBV610, SBV670, SBB700, SBV710, SBV790	FC, IF, IHC-F, IHC-P
CD45R	MCA1258	A488, A647, A700, AMO, FITC, pur., PE, PE-A647, PE-A750, PE-Cy7, SBV440, SBV475, SBV515, SBV570, SBV610, SBV670, SBB700, SBV710, SBV790	FC, IF, IHC-F, IHC-P
CD117	MCA1365	A488, A647, pur., PE, SBV440, SBV475, SBV515, SBV570, SBV610, SBV670, SBB700, SBV710, SBV790	FC
CD161	MCA1266	A647, FITC, pur., SBV440, SBV475, SBV515, SBV570, SBV610, SBV670, SBB700, SBV710, SBV790	CT, FC, FN, IP
F4/80	MCA497	A488, A647, A700, AMO, APC, biotin, FITC, PB, pur., PE, PE-A647, PE-A750, SBV440, SBV515, SBV570, SBV610, SBV670, SBB700	EM, FC, IF, IHC-F, IHC-P, IHC-R, IP, WB
Ly-6C	MCA2389	A488, A647, A700, biotin, FITC, PB, pur., PE, SBV440, SBV515, SBV570, SBV610, SBV670, SBB700	FC, IHC-F, IP

Also available:

	Catalog #	Formats	Applications
Streptavidin	STAR210	SBV440, SBV475, SBV515, SBV570, SBV610, SBV670, SBB700, SBV710, SBV790	FC

Abbreviations: CT, cytotoxic assay; E, ELISA; EM, immunoelectron microscopy; FC, flow cytometry; FN, functional assay; IF, immunofluorescence; IHC-F, immunohistology – frozen sections; IHC-P, immunohistology – paraffin sections; IHC-R, resin immunohistological sections; IP, immunoprecipitation; WB, western blotting.

Be the First to Know

Sign up to our emailers at bio-rad-antibodies.com/star, to be the first to hear when new products are released, including new StarBright Dyes.

Bio-Rad is a trademark of Bio-Rad Laboratories, Inc. in certain jurisdictions. All trademarks used herein are the property of their respective owner.



Bio-Rad
Laboratories, Inc.