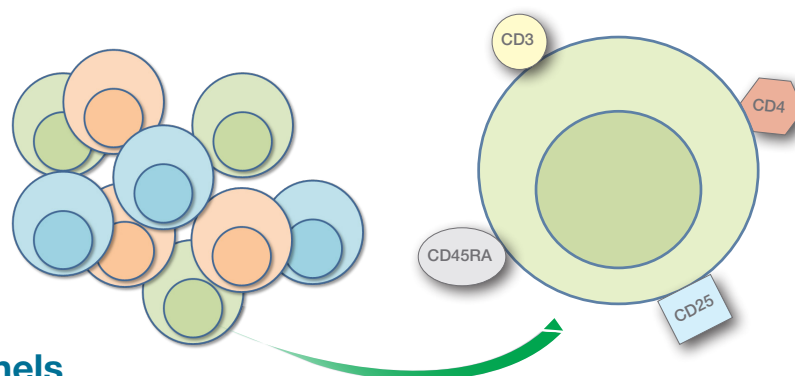


Immunophenotype without Compensation



Knowing how much compensation to use and when to perform it can be daunting in flow cytometry. Our four color immunophenotyping panels overcome these challenges. The panels found here include common surface markers for human and mouse blood and tissue that will allow you to identify many populations, such as T cells, B cells, NK and myeloid populations with little or no compensation required.



Human No Compensation Panels

General Identification Panels

T, B and myeloid cells

Marker	Catalog #	Format	Other Available Formats
CD19	MCA1940	PB	Pur., A488, A647, A700, APC, B., FITC, RPE, RPE-A750
CD66b	MCA216	FITC	Pur.
CD3	MCA463	RPE-A750	Pur., A488, A647, A700, APC, FITC, RPE, RPE-Cy5, RPE-Cy5.5, RPE-A647
CD14	MCA1568	A647	Pur., A700, B., FITC, PB, RPE, RPE-A647, RPE-A750

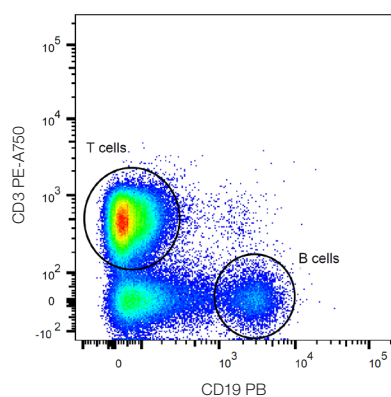
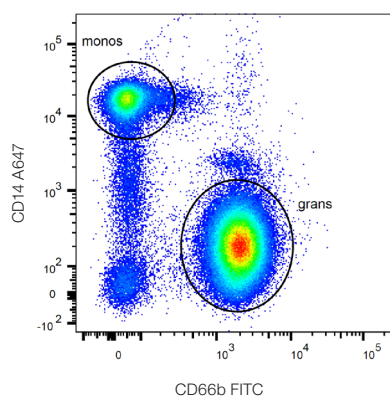


Fig. 1. Identification of T, B and myeloid cells in human peripheral blood using CD3, CD19, CD14 and CD66b antibodies.

T Cell Panels

Helper and cytotoxic T cells

Marker	Catalog #	Format	Other Available Formats
CD45	MCA87	PB	Pur., A488, A647, A700, APC, B., PerCP, RPE, RPE-Cy5.5, RPE-A647, RPE-A750
CD8	MCA1226	FITC	Pur., A488, A647, A700, APC, B., PB, RPE, RPE-A647
CD3	MCA463	RPE-A750	Pur., A488, A647, A700, APC, FITC, RPE, RPE-Cy5, RPE-Cy5.5, RPE-A647
CD4	MCA1267	A647	Pur., A488, A700, APC, FITC, PB, RPE, RPE-A647

Activated T cells

Marker	Catalog #	Format	Other Available Formats
CD4 or CD8	MCA1267 or MCA1226	PB	Pur., A488, A647, A700, APC, FITC, RPE, RPE-A647 Pur., A488, A647, A700, APC, B., FITC, RPE, RPE-A647
HLA-DR	MCA71	FITC	Pur., RPE
CD38	MCA1019	RPE-A750	Pur., A488, A647, B., FITC, RPE
CD3	MCA463	A647	Pur., A488, A700, APC, FITC, RPE, RPE-Cy5, RPE-Cy5.5, RPE-A647, RPE-A750

Regulatory T cells

Marker	Catalog #	Format	Other Available Formats
CD4	MCA1267	PB	Pur., A488, A647, A700, APC, FITC, RPE, RPE-647
CD25	MCA2127	FITC	Pur., A488, A647, B., RPE
CD3	MCA463	RPE-A750	Pur., A488, A647, A700, APC, FITC, RPE, RPE-Cy5, RPE-Cy5.5, RPE-A647
CD127	HCA145	A647	Pur., A488, FITC

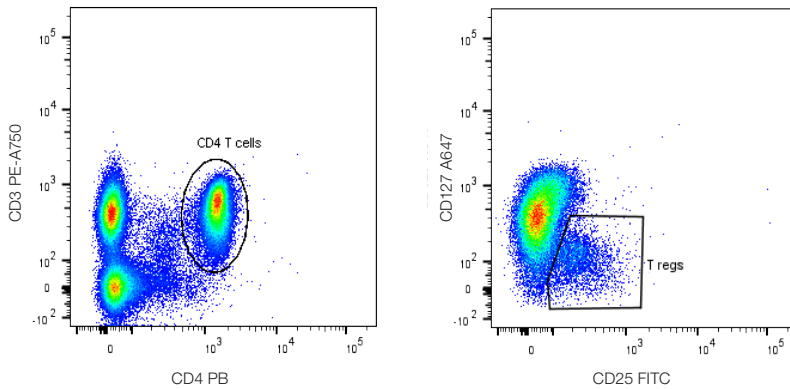


Fig. 2. Identification of CD3⁺ CD4⁺ CD127^{lo} CD25^{hi} regulatory T cells without permeabilization.

Memory and naïve T cells

Marker	Catalog #	Format	Other Available Formats
CD45RA	MCA88	PB	Pur., A488, A647, A700, FITC, RPE, RPE-A647
CD45RO	MCA461	FITC	Pur., RPE, RPE-Cy5
CD3	MCA463	RPE-A750	Pur., A488, A647, A700, APC, FITC, RPE, RPE-Cy5, RPE-Cy5.5, RPE-A647
CD4 or CD8	MCA1267 or MCA1226	A647	Pur., A488, A700, APC, FITC, PB, RPE, RPE-A647 Pur., A488, A700, APC, B., FITC, PB, RPE, RPE-A647

B Cell Panels

Memory and naïve B cells

Marker	Catalog #	Format	Other Available Formats
CD20	MCA1710	PB	Pur., A488, A647, A700, APC, B., FITC, RPE, RPE-Cy5
IgD	STAR143	FITC	Pur.
CD19	MCA1940	RPE-A750	Pur., A488, A647, A700, APC, B., FITC, PB, RPE
CD27	MCA755	A647	Pur., FITC, RPE

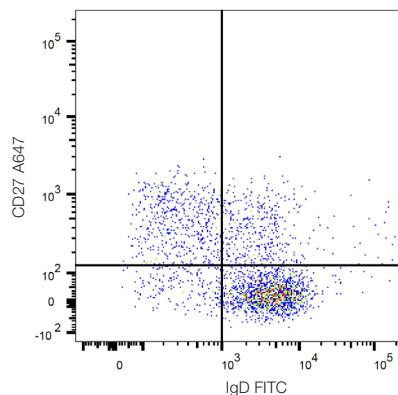
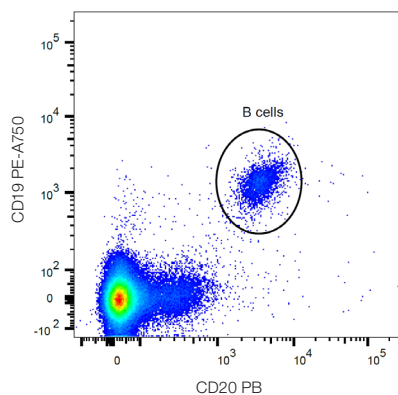


Fig. 3. Identification of naïve IgD⁺ and memory CD27⁺ cells in the CD19⁺ CD20⁺ B cell population in human peripheral blood.

Transitional B cells and plasmablast

Marker	Catalog #	Format	Other Available Formats
CD20	MCA1710	PB	Pur., A488, A647, A700, APC, B., FITC, RPE, RPE-Cy5
CD24	MCA1379	FITC	Pur., RPE
CD38	MCA1019	RPE-A750	Pur., A488, A647, B., FITC, RPE
CD19	MCA1940	A647	Pur., A488, A700, APC, B., FITC, PB, RPE, RPE-A750

Class switched memory B cells

Marker	Catalog #	Format	Other Available Formats
CD20	MCA1710	PB	Pur., A488, A647, A700, APC, B., FITC, RPE, RPE-Cy5
IgG	204002	FITC	N/A
CD19	MCA1940	RPE-A750	Pur., A488, A647, A700, APC, B., FITC, PB, RPE
CD27	MCA755	A647	Pur., FITC, RPE

NK and NKT Cell Panels

NK panel 1

Marker	Catalog #	Format	Other Available Formats
CD45	MCA87	PB	Pur., A488, A647, A700, APC, B., FITC, PerCP, RPE, RPE-Cy5.5, RPE-A647, RPE-A750
CD3	MCA463	FITC	Pur., A488, A647, A700, APC, RPE, RPE-Cy5, RPE-Cy5.5, RPE-A647, RPE-A750
CD19	MCA1940	RPE-A750	Pur., A488, A647, A700, APC, B., FITC, PB, RPE
CD16	MCA2537	A647	Pur., A488, A700, B., RPE
CD56	MCA2693	A647	Pur., A488, A700, FITC

NK panel 2

Marker	Catalog #	Format	Other Available Formats
CD45	MCA87	PB	Pur., A488, A647, A700, APC, B., FITC, PerCP, RPE, RPE-Cy5.5, RPE-A647, RPE-A750
CD335	MCA4646	FITC	Pur., A488, RPE
CD3	MCA463	RPE-A750	Pur., A488, A647, A700, APC, RPE, RPE-Cy5, RPE-Cy5.5, RPE-A647
CD56	MCA2693	A647	Pur., A488, A700, FITC

Mouse No Compensation Panels

General Identification Panels

T, B, NK and myeloid cells

Overview panel 1

Marker	Catalog #	Format	Other Available Formats
CD3	MCA500PB	PB	Pur., A488, A647, A700, APC, FITC, RPE
Ly6G	MCA6077F	FITC	Pur., RPE
CD11b	MCA74P750	RPE-A750	Pur., A488, A647, A700, B., FITC, RPE, RPE-Cy5, RPE-A647
CD19	MCA1439A647	A647	Pur., A488, A700, APC, B., FITC, PB, RPE, RPE-Cy5, RPE-A647

Overview panel 2

Marker	Catalog #	Format	Other Available Formats
CD3	MCA500PB	PB	Pur., A488, A647, A700, APC, FITC, RPE
CD49b	MCA2125F	FITC	Pur., B.
B220	MCA1258P750	RPE-A750	Pur., A488, A647, A700, FITC, RPE, RPE-A647, RPE-Cy7
CD11b	MCA74A647	A647	Pur., A488, A700, B., FITC, RPE, RPE-Cy5, RPE-A647, RPE-A750

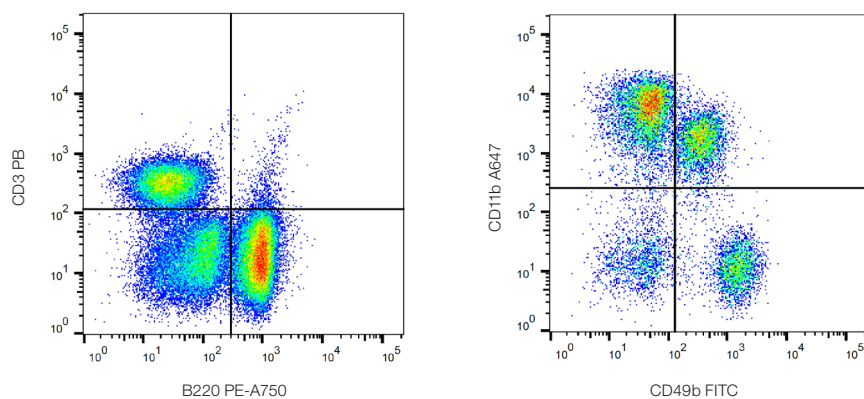


Fig. 4. Identification of T, B, NK and myeloid cells using CD3, B220, CD49b and CD11b antibodies. Data acquired on the ZE5™ Cell Analyzer.

Lymphocyte Panels

Helper and cytotoxic T cells

Marker	Catalog #	Format	Other Available Formats
CD3	MCA500PB	PB	Pur., A488, A647, A700, APC, FITC, RPE
CD45	MCA1031F	FITC	Pur., A488, A647, A700, RPE
CD8	MCA609P750	RPE-A750	Pur., A488, A647, A700, APC, FITC, PB, RPE, RPE-A647
CD4	MCA4635A647	A647	Pur., A488, FITC, RPE

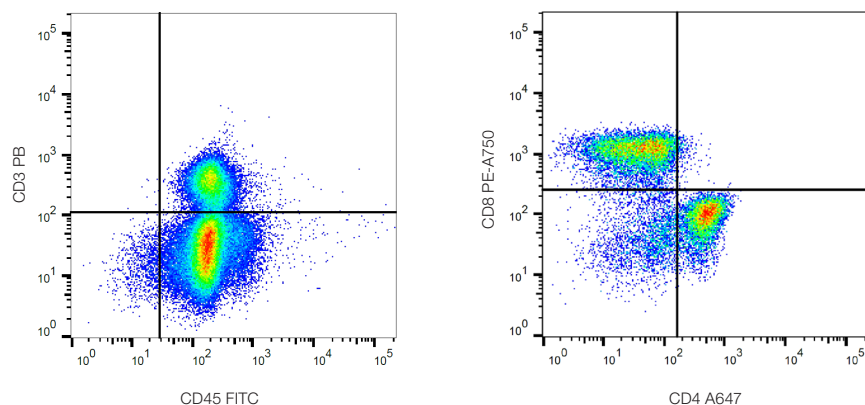


Fig. 5. Identification of CD4⁺ T helper and CD8⁺ T cytotoxic cells in the CD45⁺ CD3⁺ population. Data acquired on the ZE5 Cell Analyzer.

Activated T cells

Marker	Catalog #	Format	Other Available Formats
CD3	MCA500PB	PB	Pur., A488, A647, A700, APC, FITC, RPE
CD69	MCA1580F	FITC	Pur., RPE, RPE-Cy5
B220	MCA1258P750	RPE-A750	Pur., A488, A647, A700, FITC, RPE, RPE-A647, RPE-Cy7
CD4 or CD8	MCA4635A647 or MCA609A647	A647	Pur., A488, FITC, RPE Pur., A488, A700, APC, FITC, PB, RPE, RPE-A647, RPE-A750

Immature and mature B cells

Marker	Catalog #	Format	Other Available Formats
CD19	MCA1439PB	PB	Pur., A488, A647, A700, APC, B., FITC, RPE, RPE-CY5, RPE-A647
IgM	HCA040F	FITC	Pur.
B220	MCA1258P750	RPE-A750	Pur., A488, A647, A700, FITC, RPE, RPE-A647, RPE-Cy7
CD23	MCA2348	A647	Pur., A488, RPE

Naïve and memory B cells

Marker	Catalog #	Format	Other Available Formats
CD19	MCA1439PB	PB	Pur., A488, A647, A700, APC, B., FITC, RPE, RPE-Cy5, RPE-A647
CD80	MCA2462F	FITC	Pur., A488, A647, RPE
B220	MCA1258P750	RPE-A750	Pur., A488, A647, A700, FITC, RPE, RPE-A647, RPE-Cy7
CD23	MCA2348A647	A647	Pur., A488, RPE

NK Cell and Myeloid Panels

NK and NKT cells

Marker	Catalog #	Format	Other Available Formats
CD3	MCA500PB	PB	Pur., A488, A647, A700, APC, FITC, RPE
CD122	MCA2363F	FITC	Pur., FITC, RPE
CD335	MCA5938PECy7	RPE-Cy7	Pur., FITC, RPE
CD45	MCA1031A647	A647	Pur., A488, A700, FITC, RPE

Myeloid cells

Marker	Catalog #	Format	Other Available Formats
CD11b	MCA711PB	PB	Pur., A647, A700, FITC, RPE
Ly6G	MCA6077F	FITC	Pur., RPE
CD11c	MCA1369P750	RPE-A750	Pur., A488, FITC, A647, B., RPE, RPE-A647, RPE-A750
Ly6C	MCA2389A647	A647	Pur., A488, A700, B., FITC, PB, RPE

Abbreviations. Axxx, Alexa Fluor, B., Biotin, PB, Pacific Blue, Pur., Purified.

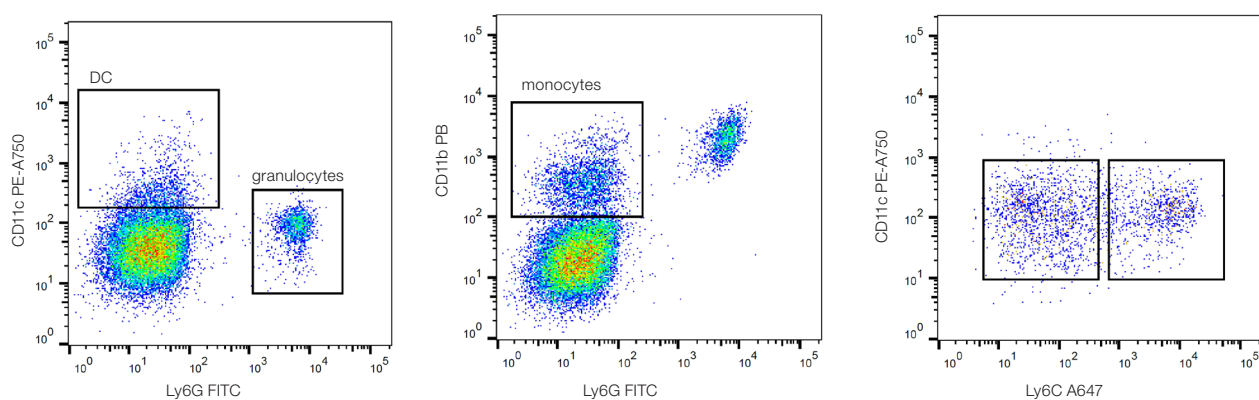


Fig. 6. Myeloid cells. A, identification of dendritic cells (DC) and granulocytes. B, monocytes. C, classical Ly6C^{hi} and non-classical Ly6C^{lo} monocytes. Data acquired on the ZE5 Cell Analyzer.

Visit bio-rad-antibodies.com/no-comp-panels for more information.



**Bio-Rad
Laboratories, Inc.**

Life Science
Group

Web site bio-rad-antibodies.com

Austria, Germany, Netherlands & Switzerland 49 89 80 90 95 21 Belgium & Luxembourg 44 1865 852 357 Canada & USA 1 800 424 6723
France 44 1865 852 357 United Kingdom, Scandinavia & other countries 44 1865 852 700 Custom Services 49 89 80 90 95 45

